

This is Google's cache of <https://le-select.info/nsapay>. It is a snapshot of the page as it appeared on Jul 26, 2021 10:59:07 GMT. The [current page](#) could have changed in the meantime. [Learn more](#).

Full version [Text-only version](#) [View source](#)

Tip: To quickly find your search term on this page, press **Ctrl+F** or **⌘-F** (Mac) and use the find bar.

Mga larawan at Larawan

Paghahanap ng imahe

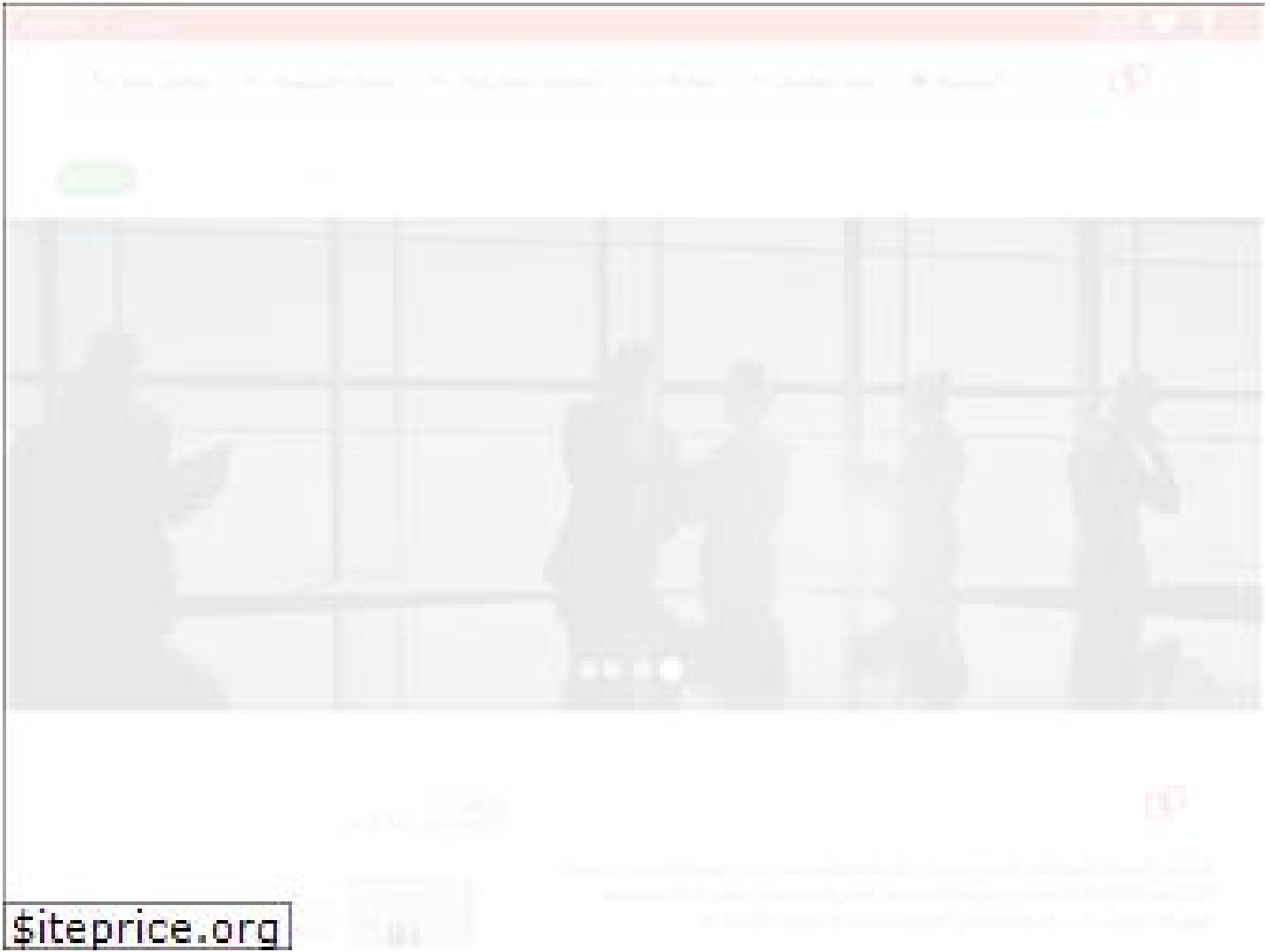
Pindutin dito



achat-licence.fr at WI. BWM Mediasoft - built wise media

403 - Forbidden: Access is denied.

[403 - Forbidden: Access is denied.](#)

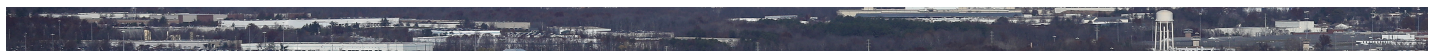


siteprice.org

Top 43 Similar websites like naspay.com and alternatives



[Nsa Pay Blueberry 4pulg a domicilio | Cornershop by Uber ...](#)





NSA's top talent is leaving because of low pay, slumping ...

 www.Nsapay.com

www.Nsapay.com

 Myanmar Bookshop - Myanmar Books - Book Details

[Myanmar Bookshop - Myanmar Books - Book Details](#)



North Shore Agency

Login

View Bill

Make Payment

Please locate your account number and zip code on your bill and enter them below to verify your account. Your account number has two parts: a 3-digit EXT number and a 12-digit ID number.

12-digit ID #

3-digit Zip Code

3-digit EXT #

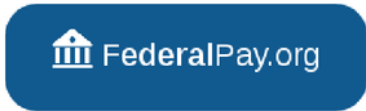


Account # EXT

ID #

3-digit Zip Code

Submit



GS Locality Rates 2018 Base GS Pay Scale

2018 Locality Adjustment: --%

Official General Schedule Base Rates
Effective from January 1, 2018 to December 31, 2018.

GS Grade	Step 1	Step 2	Step 3	Step 4	Step 5	Step 6	Step 7	Step 8	Step 9	Step 10
GS-1	\$18,785	\$19,414	\$20,039	\$20,660	\$21,285	\$21,650	\$22,267	\$22,891	\$22,915	\$23,502
GS-2	\$21,121	\$21,624	\$22,323	\$22,915	\$23,175	\$23,857	\$24,539	\$25,221	\$25,903	\$26,585
GS-3	\$23,045	\$23,813	\$24,581	\$25,349	\$26,117	\$26,885	\$27,653	\$28,421	\$29,189	\$29,957
GS-4	\$25,871	\$26,733	\$27,595	\$28,457	\$29,319	\$30,181	\$31,043	\$31,905	\$32,767	\$33,629
GS-5	\$28,945	\$29,910	\$30,875	\$31,840	\$32,805	\$33,770	\$34,735	\$35,700	\$36,665	\$37,630
GS-6	\$32,264	\$33,339	\$34,414	\$35,489	\$36,564	\$37,639	\$38,714	\$39,789	\$40,864	\$41,939
GS-7	\$35,854	\$37,049	\$38,244	\$39,439	\$40,634	\$41,829	\$43,024	\$44,219	\$45,414	\$46,609
GS-8	\$39,707	\$41,031	\$42,355	\$43,679	\$45,003	\$46,327	\$47,651	\$48,975	\$50,299	\$51,623
GS-9	\$43,857	\$45,319	\$46,781	\$48,243	\$49,705	\$51,167	\$52,629	\$54,091	\$55,553	\$57,015
GS-10	\$48,297	\$49,907	\$51,517	\$53,127	\$54,737	\$56,347	\$57,957	\$59,567	\$61,177	\$62,787
GS-11	\$53,062	\$54,831	\$56,600	\$58,369	\$60,138	\$61,907	\$63,676	\$65,445	\$67,214	\$68,983
GS-12	\$63,600	\$65,720	\$67,840	\$69,960	\$72,080	\$74,200	\$76,320	\$78,440	\$80,560	\$82,680
GS-13	\$75,628	\$78,149	\$80,670	\$83,191	\$85,712	\$88,233	\$90,754	\$93,275	\$95,796	\$98,317
GS-14	\$89,370	\$92,349	\$95,328	\$98,307	\$101,286	\$104,265	\$107,244	\$110,223	\$113,202	\$116,181
GS-15	\$105,123	\$108,627	\$112,131	\$115,635	\$119,139	\$122,643	\$126,147	\$129,651	\$133,155	\$136,659

<https://www.federalpay.org/gs/locality>

2018 Base GS Pay Scale | GS Locality Rates

General Schedule (GS) Base Pay Scale for 2018



N.S.A. Triples Collection of Data From U.S. Phone Companies ...





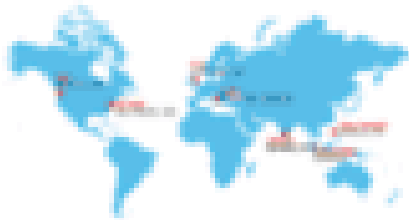
[File:Poonsapaya Navawongs na Ayudhya.jpg - Wikimedia Commons](#)



NSAP - DEFINED

The Navigation Skills Assessment Program (NSAP), developed by WTTW, is a web-based measurement and reporting tool designed to objectively assess a mariner's competency. Tailored specifically for the core skills required of licensed deck officers, as defined by international standards (IMO) and industry best practices.

[LEARN MORE](#)



PRESENTED WORLDWIDE

As a result of global demand for an objective tool to test navigators, WTTW has implemented the NSAP at various International Training Centers (ITC) throughout the world.

[LEARN MORE](#)

nsap.com at WI. Navigation Skills Assessment Program | NSAP ...

CarlitosLeeRay on Twitter: "I got head from 2 customers ...

[CarlitosLeeRay on Twitter: "I got head from 2 customers ...](#)

CRACK FAUCET
[Login](#) [Help](#) [Signup](#)

Claim 67 satoshis every 20 minutes

In this page you can win satoshis just filling captchas.
Join the millions of people who earn bitcoins.
You'll earn 30% of your referral earnings.
1 satoshi = 0.00000001 bitcoin

Min Payout 30000 Satoshi

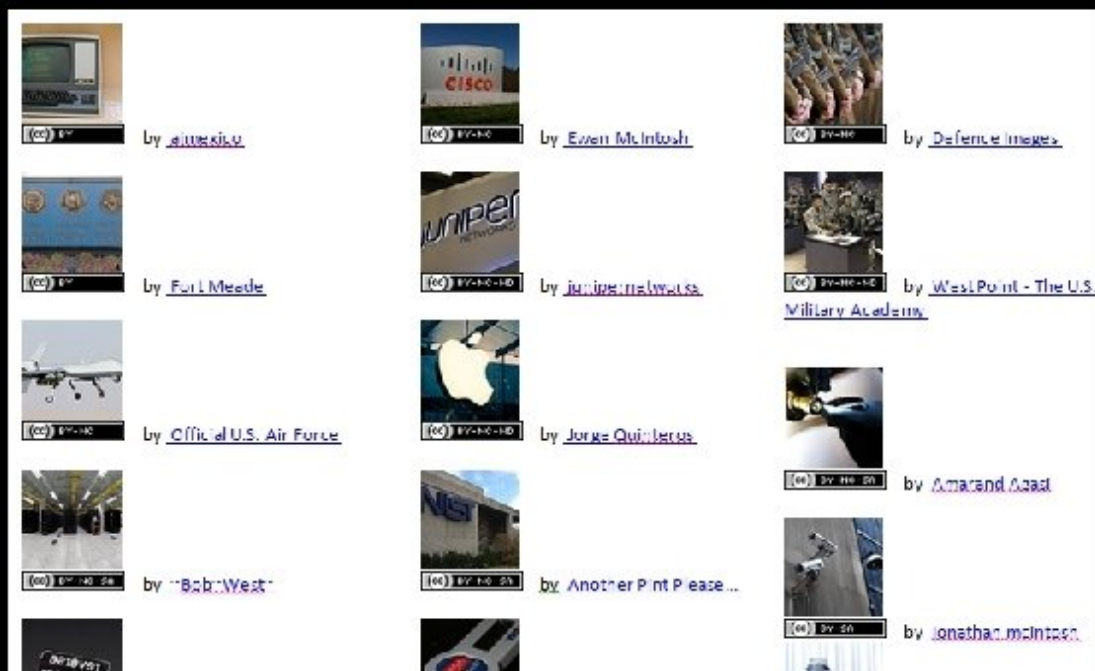
[Bitcoin Captcha Faucet Red Hat Linux Bitcoin Miner | Japanauto](#)





Dragon Couple - GIF on Imgur

Thank You





by acafruit



by JAN.ROSMANN



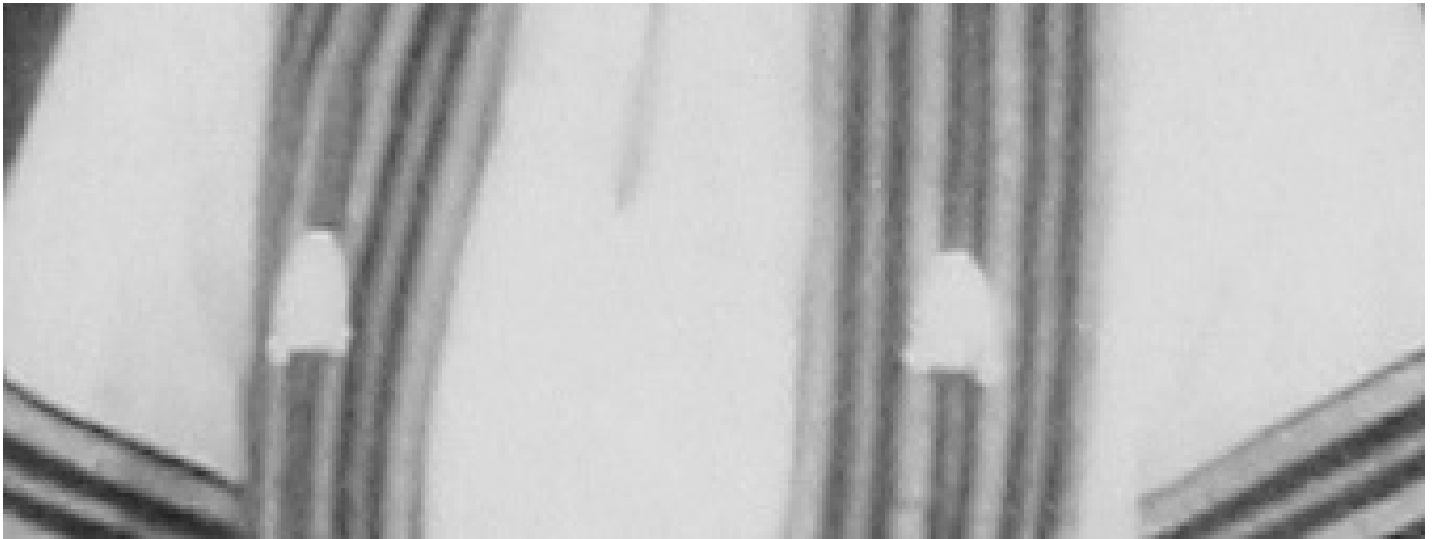
by s.ractcalowl

The Militarisation of Cyberspace Implications for ...



The Militarisation of Cyberspace Implications for ...

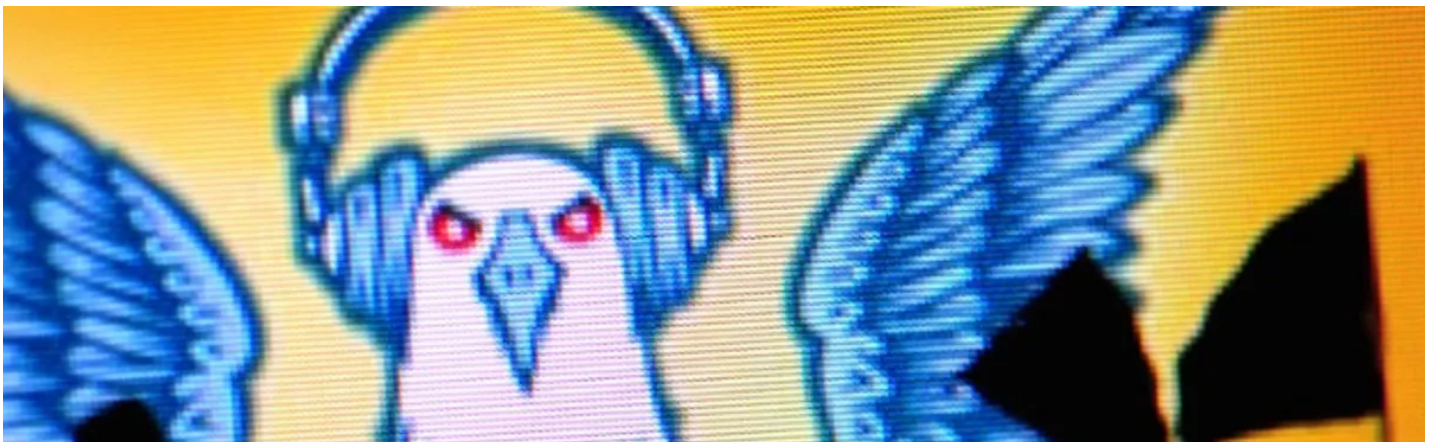




[File:Poonsapaya Navawongs na Ayudhya, Chulalongkorn ...](#)

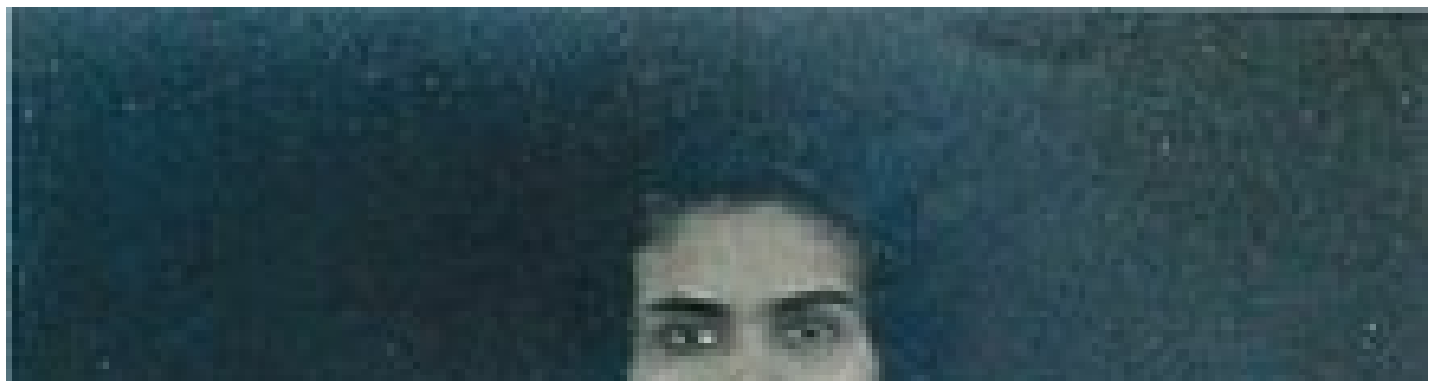


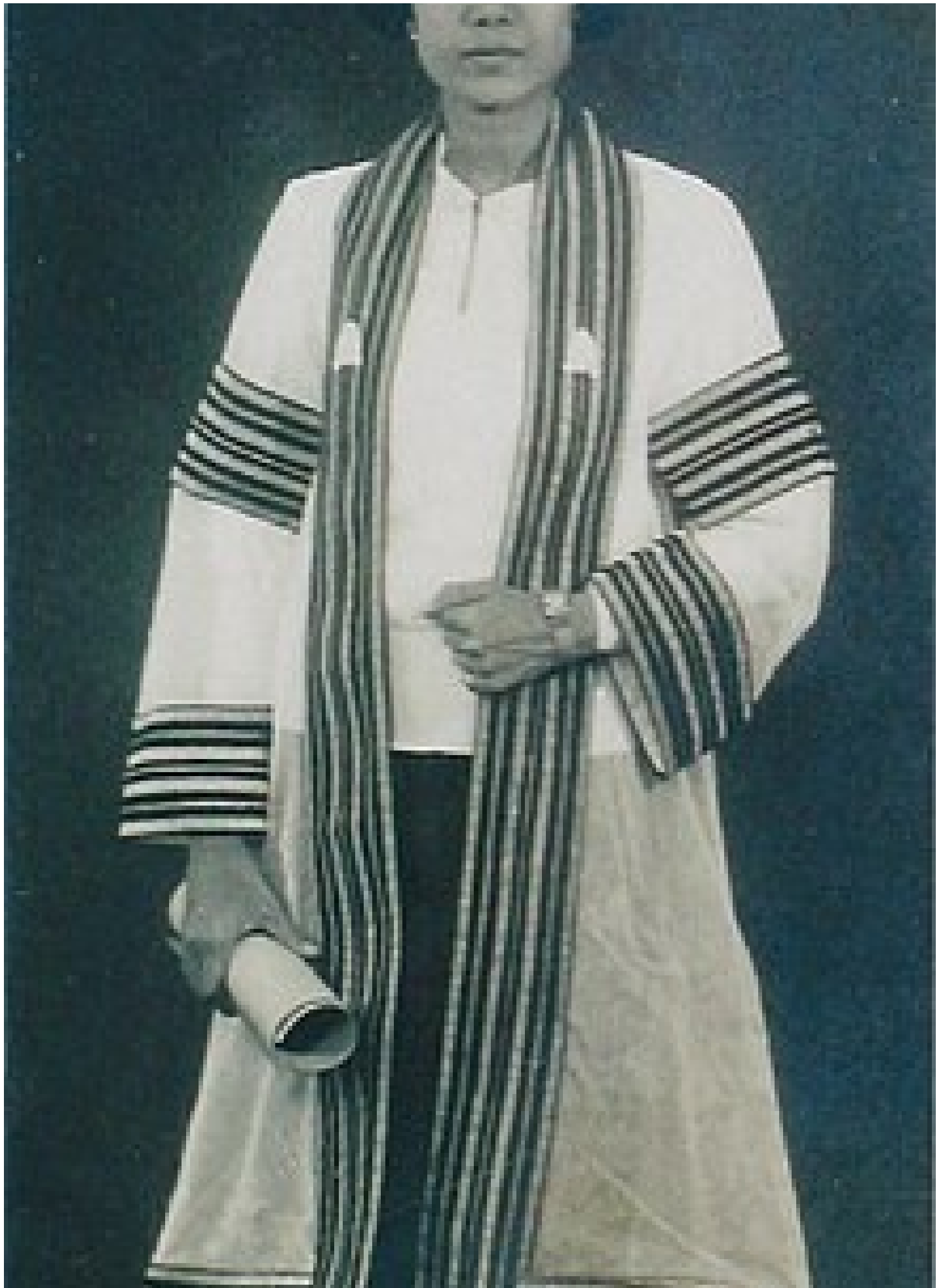
[Buy Threadz Women's Round Neck Printed Half Sleeve T-Shirt ...](#)





The NSA's greatest hiring strength is students, but ...







Poonsapaya Navawongs na Ayudhya - Wikiwand

[Home](#) | [About Us](#) | [Contact Us](#) | [Privacy Policy](#)

Greenway Products

118 Ramsey Road - Ligonier, PA 15658

800-878-8268

Welcome to Greenway Products

Greenway Products is a supplier of quality items to the wide world outdoors.
 Unless otherwise specified, all products listed are in 100% (100%) grade.

Our emphasis is on items of uniqueness and of consistently high quality. Greenway tries to obtain its materials from domestic artists and sources. From time to time Greenway also carries other U.S. and Canadian manufacturers with their product introductions and the dealers.

NOTE: Some images are "generic", meaning that these models may differ from that shown in the image. Parts may be photographed during several times when only one is sold per package. **READ THE TEXT DESCRIPTION FOR QUALITY.**

Thanks A!

Greenway Products

- Back Cars
- Custom Order (Manufacturing) Packages
- Gifts
- Greenway
- Greenway Clothing
- Knitting & Sewing
- Marine - Tackle and more
- Specialty Tools
- Greenway Kids, Baby, Women
- Greenway Cars
- Knitting/Needle
- Specialty Products
- Greenway Sewing and more
- Big Green Bikes
- Greenway Marine, Tackle, and more

Beagle Bear Car - Support The Arets Fund



Beagle Bear - Greenway's Beagle

\$29.95

[ADD TO CART](#)

Look what's new here

[greenwayproducts.com](https://www.greenwayproducts.com) at Website Informer. Visit ...



Women less likely to receive retention pay at NSA





BYD Tang DM Plug-in hybrid China auto sales figures



NSPA | Home

Sampling error estimation

$$\begin{array}{cccc}
 & P_1 & P_2 & P_3 & \dots \\
 & \downarrow & \downarrow & \downarrow & \\
 (A \rightarrow Q)? & 1 & 0 & 1 & \dots
 \end{array}$$

$$\text{Pr}(A \rightarrow Q) = \frac{\sum_i I_{A \rightarrow Q}(\text{Paths}_i)}{j}$$

“ Error estimation

- “ Bernoulli distribution

$$\text{Pr}[I_{A \rightarrow Q}(P_1), I_{A \rightarrow Q}(P_2), I_{A \rightarrow Q}(P_3), \dots | \text{Pr}(A \rightarrow Q)]$$

$$\text{Pr}[\text{Pr}(A \rightarrow Q) | I_{A \rightarrow Q}(P_1), I_{A \rightarrow Q}(P_2), I_{A \rightarrow Q}(P_3), \dots]$$

- “ Prior $\text{Beta}(\alpha, \beta) \sim \text{uniform}$

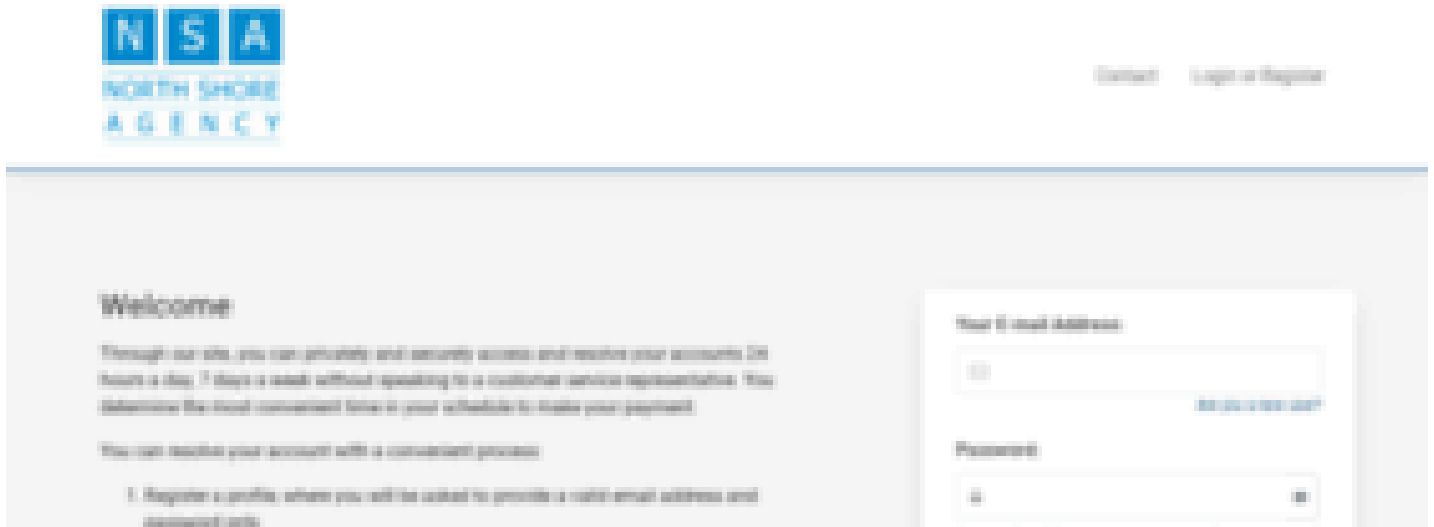


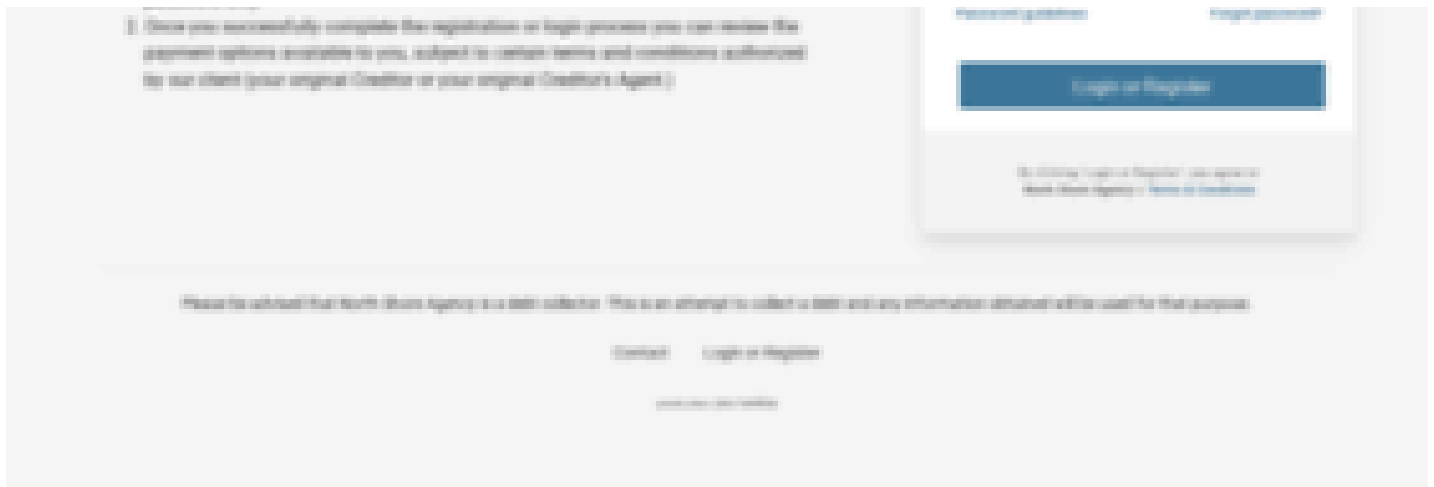
$$\Pr(A \rightarrow Q) \sim \text{Beta}\left(\sum_{\text{Paths}} I_{A \rightarrow Q}(P_i) + 1, \sum_{\text{Paths}} \bar{I}_{A \rightarrow Q}(P_i) + 1\right)$$

Anonymous communications High latency systems Messaging ...



Resolved] North Shore Agency Review: Rip off ...





[nsapay.com at WI. Login or Register - North Shore Agency ...](#)



[NSA Pay Scale](#)

Annual Pay for Federal Cybersecurity Professionals, by Grade

Civilian Grade	Percentage of Occupation	Annual Pay Band (\$)
GS-15	2	123,758–155,500
GS-14	12	105,211–136,771
GS-13	19	89,033–115,742
GS-12	28	74,872–97,333
GS-10/11	18	56,587–81,204
GS-8/9	17	46,745–67,114
GS-6/7	2	37,983–54,875
GS-5	2	34,075–44,293

SOURCES: Office of Personnel Management, 2012; occupational percentages from Department of Defense *Cyber Operations Personnel Report*, p. 15.

NOTE: Annual pay bands are for the Washington, D.C./Baltimore area.

The real cybersecurity workforce challenge: Hiring the 'best ...





Spies, Unable to Telework, Adapt Their Access to U.S. ...

Package List



2 din car radio multimedia player for BMW E90 E91 E92 E93 2005 Onwards android auto audio GPS navigation video player





UHJ and America NSA pay?: bahai





2 din car radio multimedia player for BMW E90 E91 E92 E93 2005 Onwards android auto audio GPS navigation video player



The NSA's Bulk Collection Is Over, but Google and Facebook ...

ourhiddenhistory/ CIABASE



Ralph McGehee's CIABASE

3
Contributors

1
Issue

1
Star

0
Forks



[CIABASE/MAA at master](#) · [ourhiddenhistory/CIABASE](#) · [GitHub](#)

• CYBER CAREERS at the NATIONAL SECURITY AGENCY •

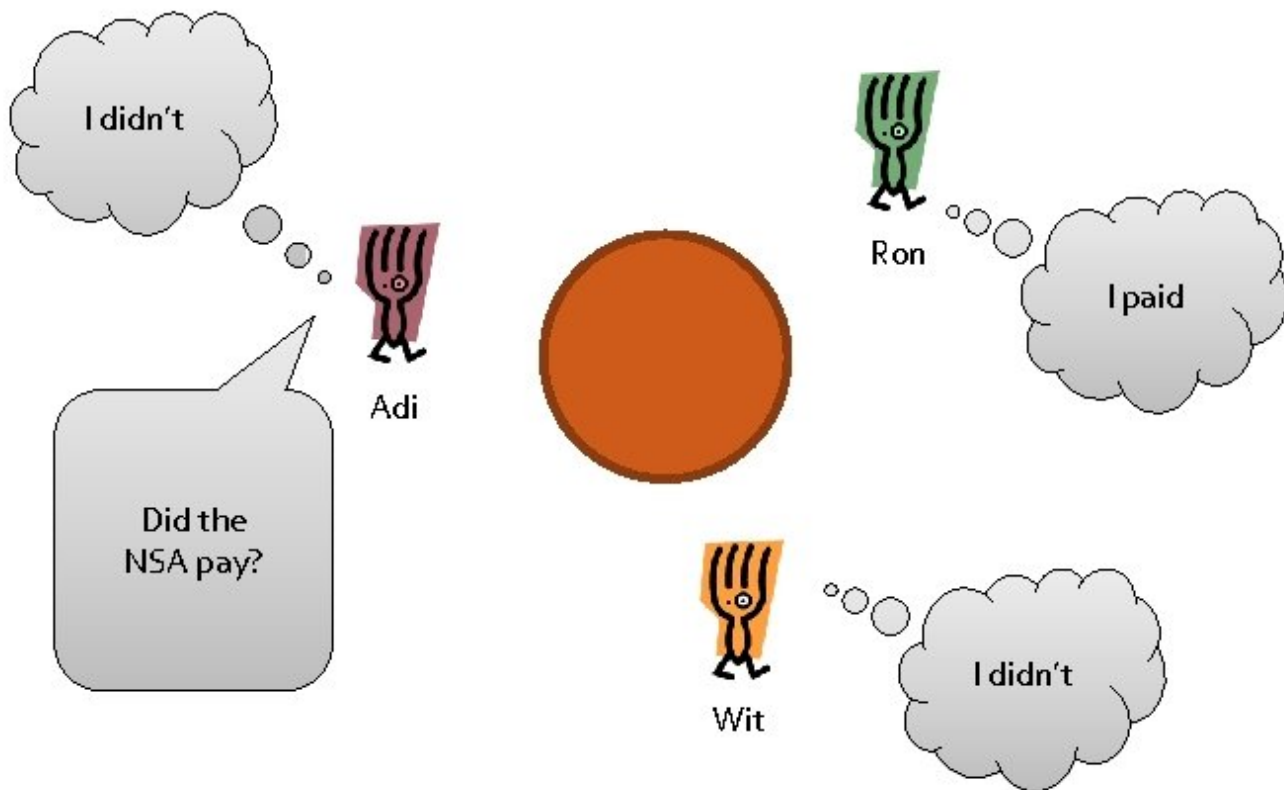
Cyber Mitigations Engineer/System Vulnerability Analyst (Entry to Experienced Level)

Identify system vulnerabilities and develop defensive strategies to prevent cyberattacks.



[NSA/CSS on Twitter: "Start your NSA career with this week's ...](#)

The Dining Cryptographers (2)



Anonymous communications High latency systems Messaging ...

How much did NSA pay to put a backdoor in RSA crypto? Try \$10m – report

Neil McAllister, The Register, 21 Dec 2013


Tech giants KNEW about PRISM, web snooping, claims top NSA lawyer

Iain Thomson, The Register, 20 Mar 2014

NIST denies it weakened its encryption standard to please the NSA

Iain Thomson, The Register, 11 Sep 2013

Constantinos Macropoulos. The Militarisation of Cyberspace ...

 BAD TRIP RECORDS :: AnneRose Blayk - CometMonger!
BAD TRIP RECORDS :: AnneRose Blayk - CometMonger!



NSA paid British spy agency \$150 mln in secret funds – new ...





[Poonsapaya Navawongs na Ayudhya - Wikipedia](#)

NISA

ORTH SHOR

GENC

[North Shore Agency Reviews, Complaints & Contacts ...](#)





NSA paid British spy agency \$150 mln in secret funds – new ...

FY2013 RMC TABLES
MONTHLY BASIC PAY EFFECTIVE 1 JANUARY 2013

YEARS OF SERVICE

PAY GRADE	UNDER 2	2	3	4	6	8	10	12	14	16	18	20	22	24	26	28	30	32	34	36	38	40	
COMMISSIONED OFFICERS																							
0-10	0.00	0.00	0.00	0.00	0.00	0.00	0.00	0.00	0.00	0.00	0.00	14975.10	14975.10	14975.10	14975.10	14975.10	14975.10	14975.10	14975.10	14975.10	14975.10	14975.10	
0-9	0.00	0.00	0.00	0.00	0.00	0.00	0.00	0.00	0.00	0.00	0.00	13917.60	14116.60	14408.10	14913.30	14913.30	14975.10	14975.10	14975.10	14975.10	14975.10	14975.10	14975.10
0-8	9647.80	10170.30	10384.50	10444.20	10711.50	11157.60	11261.40	11665.00	11806.50	12171.60	12700.20	13187.10	13512.30	13512.30	13512.30	13512.30	13850.40	13850.40	14196.60	14196.60	14196.60	14196.60	14196.60
0-7	8182.50	8562.90	8738.70	8878.50	9131.70	9381.90	9671.10	9959.40	10248.60	11157.60	11924.70	11924.70	11924.70	11924.70	11924.70	11985.60	11985.60	12225.30	12225.30	12225.30	12225.30	12225.30	12225.30
0-6	6064.80	6663.00	7100.10	7100.10	7127.10	7432.80	7473.00	7473.00	7897.80	8648.70	9089.40	9529.80	9780.60	10034.40	10526.70	10526.70	10736.70	10736.70	10736.70	10736.70	10736.70	10736.70	10736.70
0-5	5055.90	5695.50	6089.70	6164.10	6410.10	6557.10	6880.80	7118.40	7425.30	7895.10	8118.00	8338.80	8589.90	8589.90	8589.90	8589.90	8589.90	8589.90	8589.90	8589.90	8589.90	8589.90	8589.90
0-4	4362.30	5049.90	5386.80	5461.80	5774.70	6109.80	6527.70	6852.90	7078.80	7208.70	7283.70	7283.70	7283.70	7283.70	7283.70	7283.70	7283.70	7283.70	7283.70	7283.70	7283.70	7283.70	7283.70
0-3	3835.50	4347.90	4692.90	5116.50	5361.60	5630.70	5804.70	6090.60	6240.00	6240.00	6240.00	6240.00	6240.00	6240.00	6240.00	6240.00	6240.00	6240.00	6240.00	6240.00	6240.00	6240.00	6240.00
0-2	3314.10	3774.30	4347.00	4493.70	4586.40	4586.40	4586.40	4586.40	4586.40	4586.40	4586.40	4586.40	4586.40	4586.40	4586.40	4586.40	4586.40	4586.40	4586.40	4586.40	4586.40	4586.40	4586.40
0-1	2876.40	2994.00	3619.20	3619.20	3619.20	3619.20	3619.20	3619.20	3619.20	3619.20	3619.20	3619.20	3619.20	3619.20	3619.20	3619.20	3619.20	3619.20	3619.20	3619.20	3619.20	3619.20	3619.20
COMMISSIONED OFFICERS WITH OVER 4 YEARS ACTIVE SERVICE AS ENLISTED MEMBERS																							
0-3E	0.00	0.00	0.00	5116.50	5361.60	5630.70	5804.70	6090.60	6332.10	6470.70	6659.40	6659.40	6659.40	6659.40	6659.40	6659.40	6659.40	6659.40	6659.40	6659.40	6659.40	6659.40	6659.40
0-2E	0.00	0.00	0.00	4493.70	4586.40	4732.50	4978.60	5169.30	5311.20	5311.20	5311.20	5311.20	5311.20	5311.20	5311.20	5311.20	5311.20	5311.20	5311.20	5311.20	5311.20	5311.20	5311.20
0-1E	0.00	0.00	0.00	3619.20	3864.60	4007.70	4153.80	4297.20	4493.70	4493.70	4493.70	4493.70	4493.70	4493.70	4493.70	4493.70	4493.70	4493.70	4493.70	4493.70	4493.70	4493.70	4493.70
WARRANT OFFICERS																							
W-5	0.00	0.00	0.00	0.00	0.00	0.00	0.00	0.00	0.00	0.00	0.00	7047.90	7405.50	7671.60	7966.50	7966.50	8365.20	8365.20	8783.10	8783.10	9222.90	9222.90	9222.90
W-4	3963.90	4263.90	4386.00	4506.60	4713.90	4919.10	5126.70	5439.60	5713.50	5974.20	6187.50	6395.40	6701.10	6952.20	7238.70	7238.70	7383.30	7383.30	7383.30	7383.30	7383.30	7383.30	7383.30
W-3	3619.50	3770.40	3925.20	3975.90	4138.20	4457.10	4789.20	4945.50	5126.40	5313.00	5648.10	5874.30	6009.90	6153.90	6349.50	6349.50	6349.50	6349.50	6349.50	6349.50	6349.50	6349.50	6349.50
W-2	3202.80	3505.80	3599.40	3663.30	3871.20	4194.00	4353.90	4511.40	4704.00	4854.30	4990.80	5153.70	5261.10	5346.30	5346.30	5346.30	5346.30	5346.30	5346.30	5346.30	5346.30	5346.30	5346.30
W-1	2811.60	3114.00	3195.30	3367.50	3570.90	3870.60	4010.40	4205.70	4398.30	4549.80	4689.00	4858.20	4858.20	4858.20	4858.20	4858.20	4858.20	4858.20	4858.20	4858.20	4858.20	4858.20	4858.20
ENLISTED MEMBERS																							
E-9	0.00	0.00	0.00	0.00	0.00	0.00	4788.90	4897.50	5034.30	5194.80	5357.40	5617.50	5837.10	6068.70	6422.70	6422.70	6743.40	6743.40	7080.90	7080.90	7435.20	7435.20	7435.20
E-8	0.00	0.00	0.00	0.00	0.00	3920.10	4093.50	4200.90	4329.60	4469.10	4720.50	4847.70	5064.60	5164.90	5481.00	5481.00	5591.40	5591.40	5591.40	5591.40	5591.40	5591.40	5591.40
E-7	2725.20	2974.50	3088.20	3239.10	3357.00	3559.20	3673.20	3875.70	4043.70	4158.60	4281.00	4328.40	4487.40	4572.90	4897.80	4897.80	4897.80	4897.80	4897.80	4897.80	4897.80	4897.80	4897.80
E-6	2357.10	2593.80	2708.10	2819.40	2935.50	3196.50	3298.50	3495.30	3555.60	3599.70	3650.70	3650.70	3650.70	3650.70	3650.70	3650.70	3650.70	3650.70	3650.70	3650.70	3650.70	3650.70	3650.70
E-5	2159.40	2304.30	2415.90	2529.90	2707.50	2893.50	3045.60	3064.20	3064.20	3064.20	3064.20	3064.20	3064.20	3064.20	3064.20	3064.20	3064.20	3064.20	3064.20	3064.20	3064.20	3064.20	3064.20
E-4	1979.70	2081.10	2193.90	2304.90	2403.30	2403.30	2403.30	2403.30	2403.30	2403.30	2403.30	2403.30	2403.30	2403.30	2403.30	2403.30	2403.30	2403.30	2403.30	2403.30	2403.30	2403.30	2403.30
E-3	1787.40	1899.90	2014.80	2014.80	2014.80	2014.80	2014.80	2014.80	2014.80	2014.80	2014.80	2014.80	2014.80	2014.80	2014.80	2014.80	2014.80	2014.80	2014.80	2014.80	2014.80	2014.80	2014.80
E-2	1699.80	1699.80	1699.80	1699.80	1699.80	1699.80	1699.80	1699.80	1699.80	1699.80	1699.80	1699.80	1699.80	1699.80	1699.80	1699.80	1699.80	1699.80	1699.80	1699.80	1699.80	1699.80	1699.80
E-1	1516.20	1516.20	1516.20	1516.20	1516.20	1516.20	1516.20	1516.20	1516.20	1516.20	1516.20	1516.20	1516.20	1516.20	1516.20	1516.20	1516.20	1516.20	1516.20	1516.20	1516.20	1516.20	1516.20
E-1C4	1402.20	0.00	0.00	0.00	0.00	0.00	0.00	0.00	0.00	0.00	0.00	0.00	0.00	0.00	0.00	0.00	0.00	0.00	0.00	0.00	0.00	0.00	0.00
JCS/CC	14975.10	SEA	7738.80																				

NOTE-BASIC PAY FOR 07-010 IS LIMITED TO LEVEL II OF THE EXECUTIVE SCHEDULE (\$14,975.10)
NOTE-BASIC PAY FOR 06 AND BELOW IS LIMITED TO LEVEL V OF THE EXECUTIVE SCHEDULE (\$12,141.60)

NSA Salaries

[-] gamerkidx 9 points 7 hours ago

You say that, but literally who uses it? Where even accepts it? As far as I am aware it is a made up currency where people are just trading with each other.

I saw a video of two people who bought 70 cards for a total of an \$80,000 investment. They didnt even see it as a legitamate currency and just convert it back into cash

permalink embed save parent report give gold reply

Want to say thanks to gamerkidx for this comment? Give them a month of [reddit gold](#).

By purchasing Reddit Gold, you agree to the [Reddit User Agreement](#).

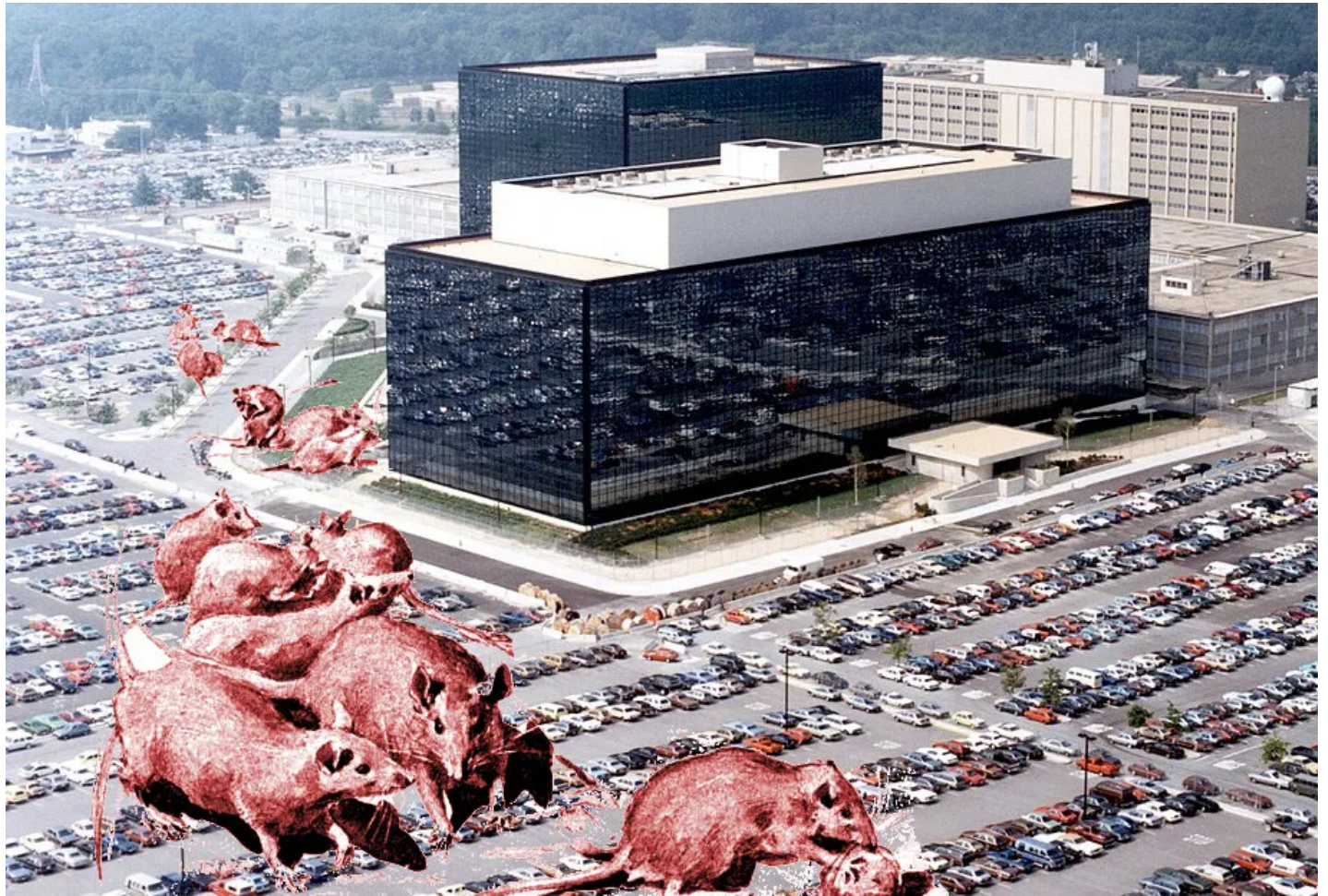
make my gift anonymous
 include a message

Please select a payment method.

[PayPal](#) [Bitcoin](#) [Credit Card](#)

Give gold [↑] often? Consider buying credits to use, they're 40% cheaper if purchased in a set of 12.
 Would you like to learn more about giving gold?

750 ti ftw hashrate man throws bitcoins dump



The NSA can't recruit or retain hackers because the pay ...





Exclusive: NSA pays £100m in secret funding for GCHQ | GCHQ ...



Wraith Mobile App Marketing Video » WOW Video Production

ARUCH POONSAPAYA

UNKNOWN OCCUPATION
ILLINOIS, 47 YO

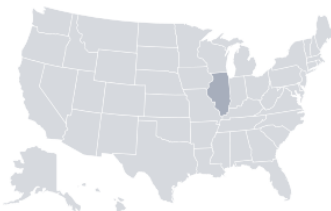
SCORPIO
NOV 10, 1973

SINGLE

(708) 867-8639 · (708) 452-2575

apoonsapaya@aol.com

LOCATIONS 9



CITY Des Plaines
STATE Illinois, IL

9 1666 Farwell Ave, Des Plaines, IL
HOME TYPE Single Family Dwelling Unit
MOVED IN 2011

8 1815 N 73rd Ave, Elmwood Park, IL

7 1815 N 75th Ct, Elmwood Park, IL

6 6134 W Montrose Ave, Chicago, IL

—

RELATIVES

6

NEIGHBORS

John F Wach
John H Schaunaman
Patricia M Schaunaman
David T Nicholson
Mary A Nicholson

+1 MORE

3

ASSOCIATES

Adelheid L Curtis
Jennifer M Orsi
Michael J Curtis

SCAN QR-CODE
to view full profile



Powered by **Nuumber**

Nuumber is not a consumer reporting agency as defined by the Fair Credit Reporting Act (FCRA) and we do not provide consumer reports. Nuumber reports contain information obtained from federal, state, and local government agencies. As such, the information may not always be 100% accurate, complete, or up to date. Nuumber does not make any representation or warranty about the accuracy of the information.

Aruch Poonsapaya (708) 867 8639 1666 Farwell Ave, Des

Hinanap din ng mga tao

Nsapay.ir
Luistimien Teroitus Joensuu
Pet Alliance 2
Hamann
O Cravo Brigou Com A Rosa
หมอลักษณ์
Sidentäcke Pris
Es Lilin
Babysam
Kim Jun Myeon
Citymarket Kaakkuri Pääsiäisen Aukioloajat
Massive Breasts
Como Imprimir Desde El Movil
Rebel Village
Melodikrysset App Ipad
Kumla Kulturskola

We have a large collection of textures and photo ranging from grunge, dirt, paint, rock, plastic, wood and liquid to metallic & rusty surfaces and backgrounds

Site-map